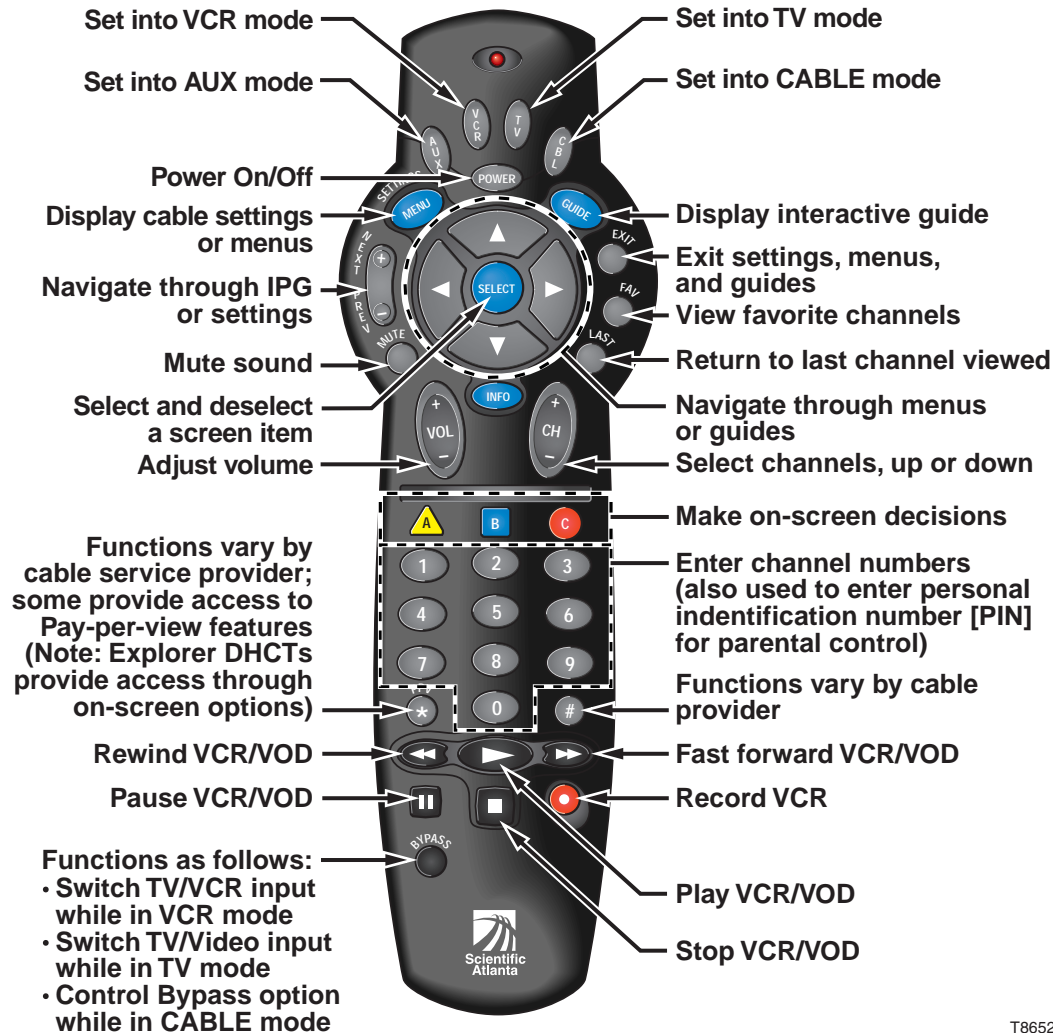






Quick Reference Card for the Interactive Program Guide

Model AT2000-4 Remote Control Special Keys for the Explorer® Digital Home Communications Terminal (DHCT)



The Interactive Program Guide (IPG)

The IPG organizes programs and events into listings by channel, theme, or title. With use of the following buttons on the remote control, you can:

-  **GUIDE** Open and close the guide on your television.
-  **SELECT** Select an option.
-  Move around in the guide to make selections with these left, right, up, and down arrows.
-  **A B C** Perform actions that are prompted on the screen, for example accept a selection or buy a pay-per-view event. Instructions on how to use the IPG features begin with the following procedure, and continue on the reverse side.

Watching a Program That Is On Now

1. Press **GUIDE** to display the IPG.

Result: The guide appears 2 hours ahead with the program on the first channel in the lineup highlighted as shown below. The program you are currently watching is reduced to fit in the upper right area of your screen. To view the current time and programming, press the **C** key.



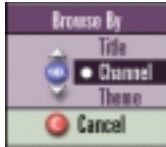
2. Do one of the following:
 - Press the **UP** or **DOWN** arrow key to move through the channels.
 - Press the **LEFT** or **RIGHT** arrow key to move through the time periods to find the program you want to watch.
3. Press **SELECT** to begin watching the highlighted program if it is on now.

Quick Reference Card for the Interactive Program Guide

Changing the Way You View the Guide

When you first display the IPG, the programs are listed by Channel. You can change the listing to view programs by Theme or by Title.

1. Press the **A** key to go to the Browse By menu.
 2. Press the **UP** or **DOWN** arrow key to choose Theme or Title.
 3. Press **SELECT**.
- Result:** The IPG displays programs by either Title or Theme, as follows.



4. Press the **UP** or **DOWN** arrow key to find a program to watch.
5. Press the **LEFT** arrow key to choose a different Theme or Title.
6. Press the **UP** or **DOWN** arrow key to choose the Theme or Title you want.

Note: When using *Browse By Theme or Title*, programs marked with a star are on now.

Exiting the IPG



At any time, you can press **EXIT** on the remote control to leave the IPG, and return to watching your program full screen.

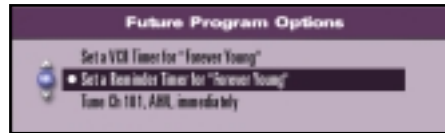
Setting a Timer for a Future Program

You can set up several types of timers to automatically remind you of programs to watch or record. You can set up to eight reminder timers and eight VCR timers for future programs.

There are three available options for non-PPV channels:

- Tune to the current channel now.
- Set a Reminder Timer to display a message on your screen reminding you of the selected program you want to watch just before it begins.
- Set a VCR Timer to tune your Explorer DHCT to a particular channel at the proper time to record the selected program.

For PPV channels, there is an additional option to purchase the PPV event.



1. Press **GUIDE** to display the IPG.
 2. Press the **UP**, **DOWN**, **LEFT**, or **RIGHT** arrow key to highlight the future program you want to watch.
 3. Press **SELECT**.
- Result:** The Future Program Options menu appears.
4. Use the **UP** or **DOWN** arrow key to choose the timer you want to set.
 5. Press **SELECT**.

Note: If you are setting a VCR timer, you must program your VCR to record at the proper time. If you have an optional VCR Commander™ module, the DHCT automatically starts and stops the VCR record function.

Cancelling an Active Record Timer

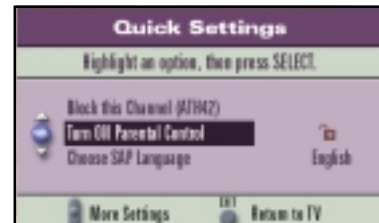
If the VCR is actively recording a program, the Explorer DHCT must be on and you must use the remote control to cancel the active record timer.

1. If the DHCT power is off, press the **POWER** key on the DHCT or the remote control.
 2. Press the **EXIT** key on the remote control.
- Result:** The recording is canceled.

Using Parental Control

Parental Control allows you to restrict certain programming. Before using parental control, you must set up blocking by channel, time, and/or rating. Refer to **Parental Control** in your *Interactive Program Guide for Explorer Digital Home Communications Terminal User's Guide*.

1. Press the **SETTINGS** key.
- Result:** The Quick Settings menu gives you the option to turn Parental Control on or off for the entire system.



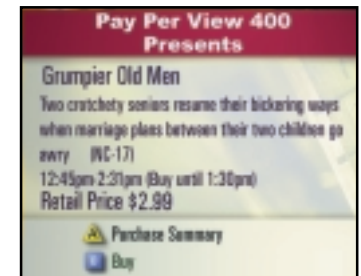
2. Press the **UP** or **DOWN** arrow key to highlight the Parental Control option.
3. Press **SELECT**.
4. Enter your Blocking PIN to turn Parental Control on or off.

Ordering a Pay-Per-View Event

PPV events are special programs not available on regular cable programming channels. You can purchase these upcoming events by pressing a button on your remote control.

1. Press the **GUIDE** key to display the IPG.
 2. Press the **UP**, **DOWN**, **RIGHT**, or **LEFT** arrow key to highlight the event you want to purchase.
- Note:** Look for the PPV symbol that indicates PPV channels.

3. Press the **SELECT** key; then, do one of the following:
 - If the event is scheduled for a future broadcast, the IPG displays the Future Program Options menu. Follow the instructions on the screen.
 - If the event is about to begin, the preview or purchase screen appears with the event information. Press the **B** key to buy the event, or follow the instructions on your screen.
4. If you have a purchase PIN for PPV events, the PIN Entry screen appears. Enter your purchase PIN to authorize the purchase.



Note: Once your purchase has been authorized, a confirmation message appears for a few seconds. If the program has not already started, an attention screen counts down until the program begins.